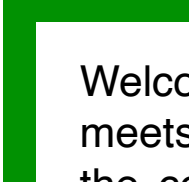




AVANTGARDE HOUSING  
士礼（上海）有限公司

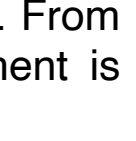
APPLE CABINS





Welcome to the future of affordable living with Apple Cabins – where modernity meets affordability in every square foot. Our innovative housing solution redefines the concept of comfortable living, bringing together sleek design, practicality, and cost-effectiveness.

Step into a world where clean lines, open spaces, and efficient layouts create an atmosphere of modern elegance. Each Apple Cabin is meticulously crafted with attention to detail, ensuring both aesthetic appeal and functional convenience. From the streamlined architecture to the carefully selected materials, every element is thoughtfully curated to enhance your living experience.

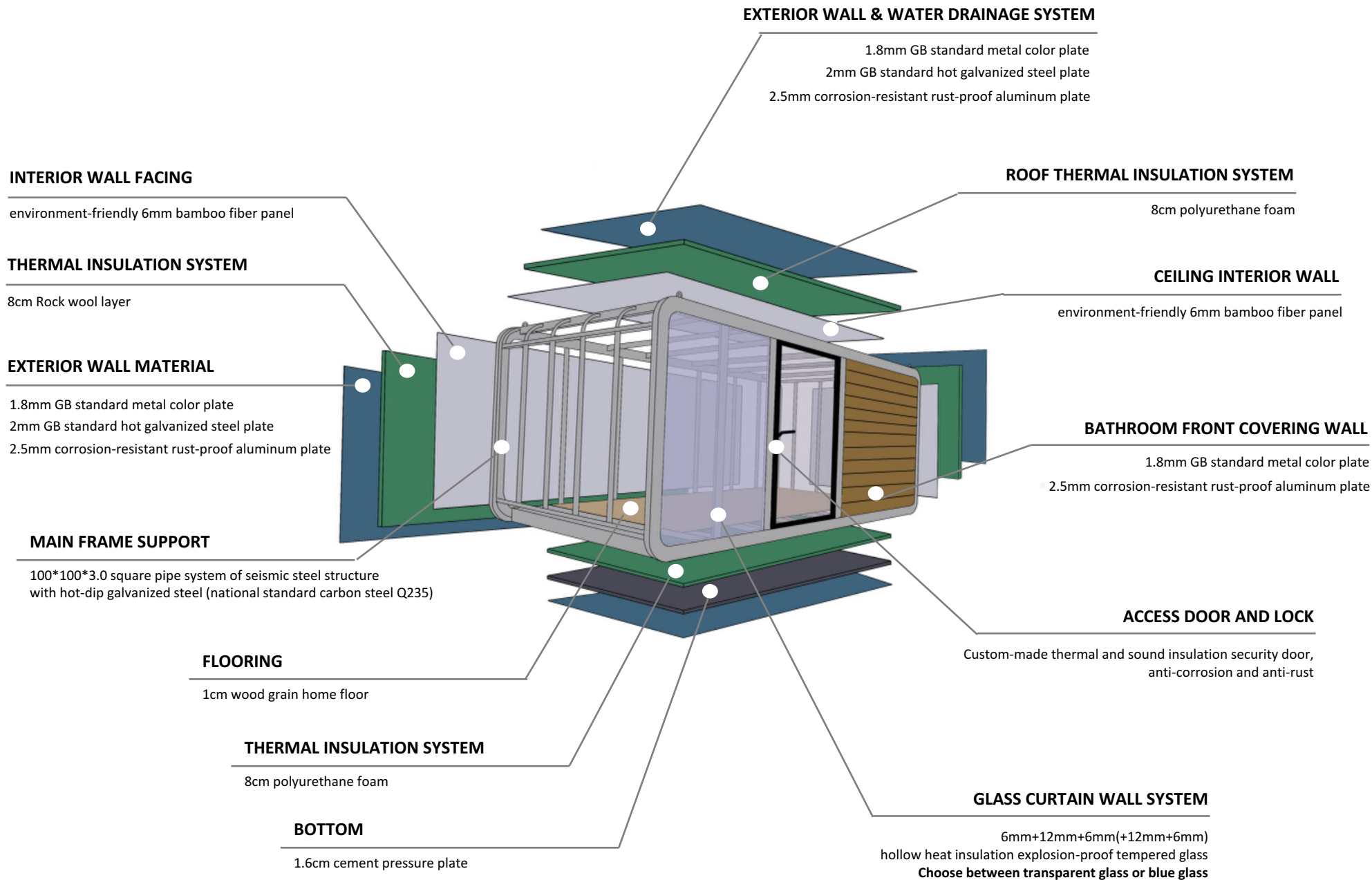


AVANTGARDE HOUSING  
士礼(上海)商务有限公司

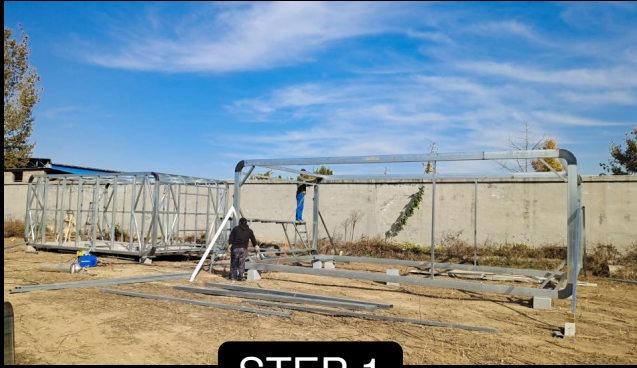
Your direct supplier from China

cabin structure









**STEP 1**

Weld the elbow part, then erect the frame and weld the bottom, top, and side wall frame.



**STEP 2**

Weld the top exterior plate and pave the bottom base plate (with cement fiberboard).



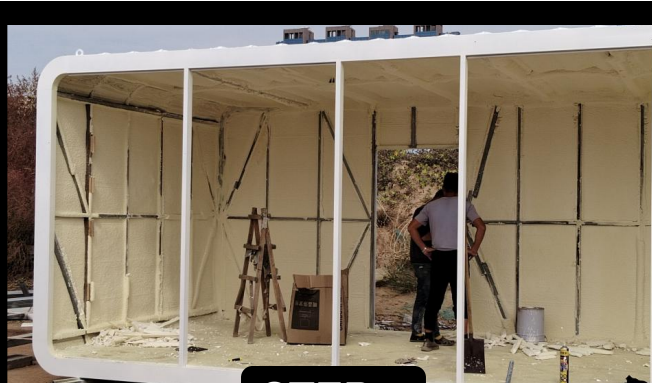
**STEP 3**

Level with putty, polish and waterproof tape welding joints. Use waterproof structural adhesive for walls and anti-corrosive paint for the roof. Full welding process.



**STEP 4**

Weld the external wall aluminum plate (bend, wash the groove and reserve the door window).



**STEP 5**

Spray insulation polyurethane foam / install rock wool, and make reserved paving for cables and water pipes.



**STEP 6**

Construct the interior wall plate with oriented strand board and use wooden square buckle for the top roof wall plate (including the installation of switch, socket, and lamps).

our products



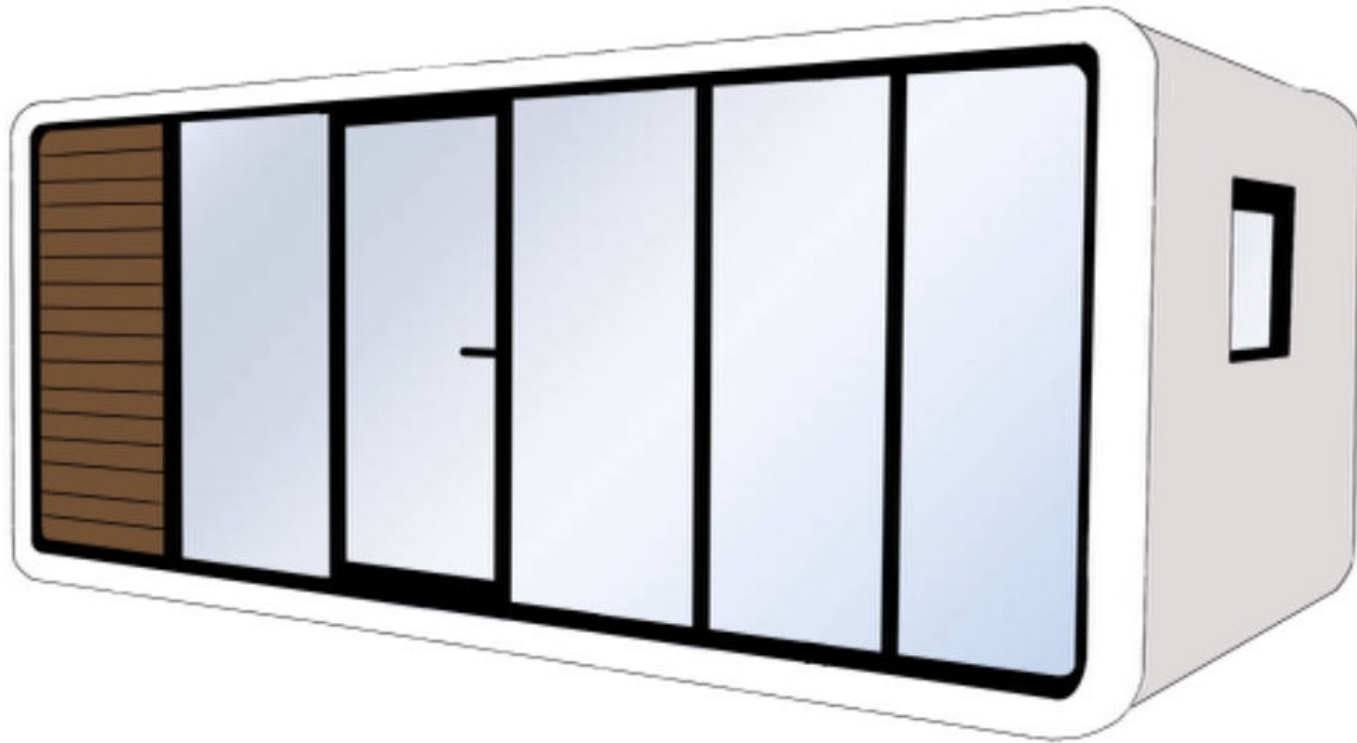


## AGH-AC-58 *ESSENTIAL*

Introducing AGH-AC-58: the epitome of minimalist living. Designed for individuals or couples seeking a compact yet functional living space, this studio-like housing solution delivers affordability without sacrificing essentials. Perfect for the modern minimalist, AGH-AC-58 optimizes every inch to offer a comfortable lifestyle in a small footprint.



AGH-AC-58 Essential



AGH-AC-58  
Essential

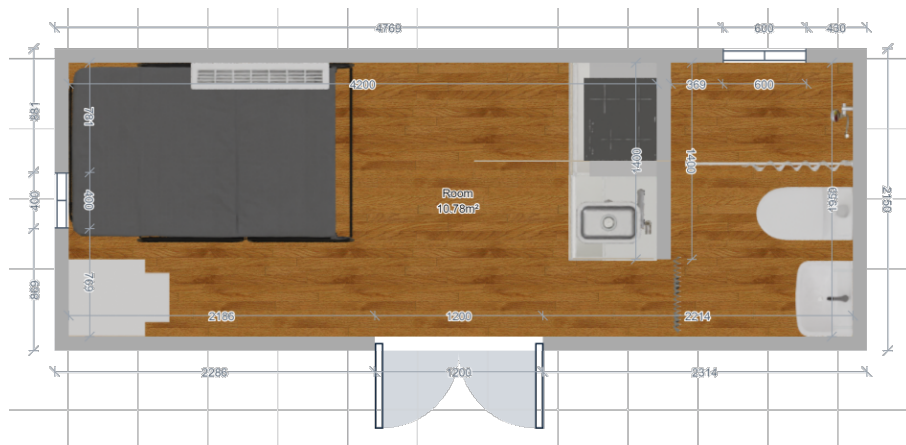
L5800mm, W2150mm, H2450mm

**From \$ 14,500 ExW**

Fully furnished

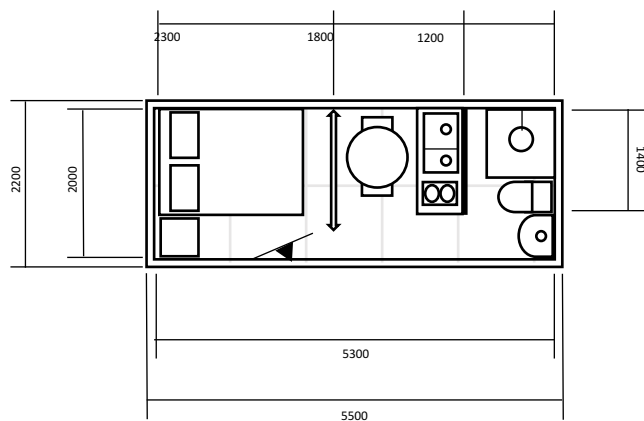


# FLOOR PLAN & ROOM ALLOCATION

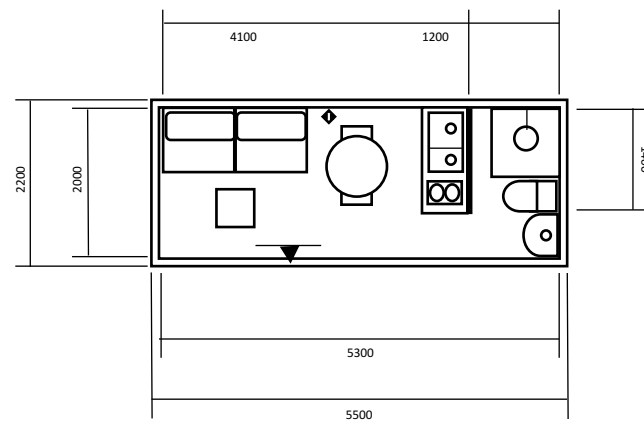
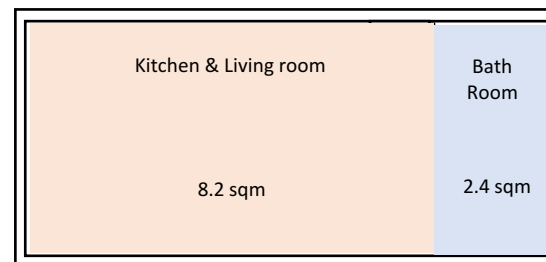


We understand that flexibility is key to maximizing your living space. With AGH-AC-58, you have the freedom to customize your living experience. Embrace the versatility of our design and discover a new level of functionality in your home. During the day, the bedroom area effortlessly transforms into a spacious living room with an open kitchen, offering the perfect setting to unwind or entertain guests.

UNFOLDED BED

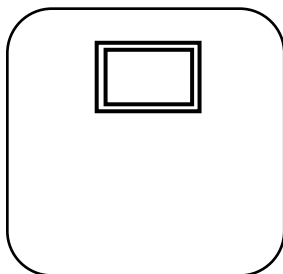


FOLDED BED



# EXTERIOR VISUAL ASPECT

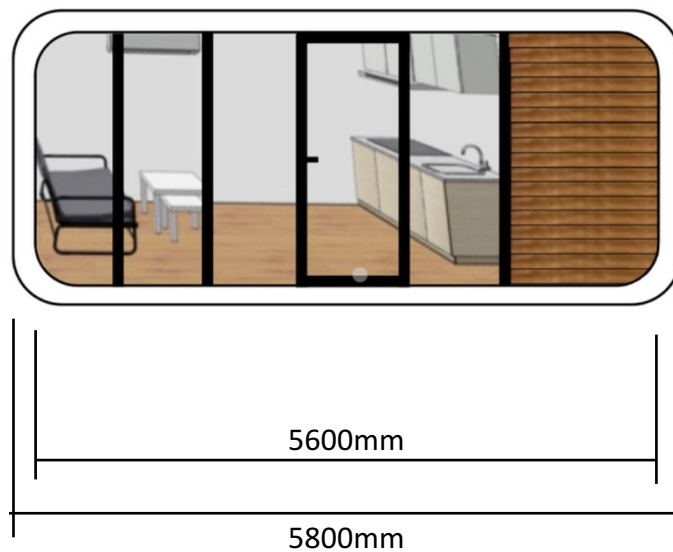
LEFTVIEW



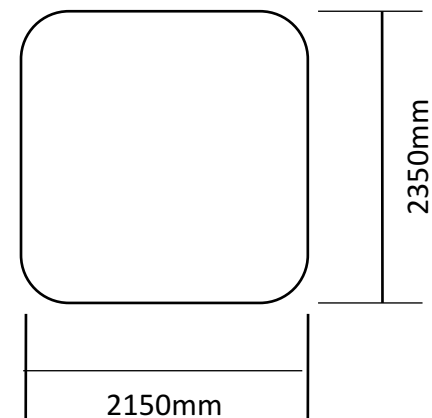
REAR VIEW

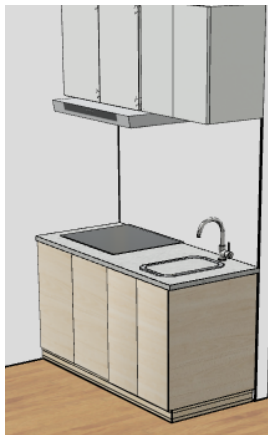


FRONT VIEW



RIGHT VIEW





## 1. ME 192 - 水槽底柜带2门



**METOD 米多** 落地柜 可嵌入设备/水槽, 白色  
80x60x80 cm



**VALLSTENA 瓦思迪纳** 柜门, 白色  
40x80 cm



**LÄNGUDDEN 兰加顿** 嵌入式水槽, 带1个槽, 不锈钢  
46x46 cm



**GLYPEN 格吕彭** 混合型水龙头, 不锈钢色



**LILLVIKEN 利维肯** 单槽下水管



**LILLVIKEN 利维肯** 盖子



**UTRUSTA 乌斯达** 厨房缓冲式合页  
110 °



## 2. ME 103 - 底柜带搁板/2门



**METOD 米多** 底柜框架, 白色  
80x60x80 cm



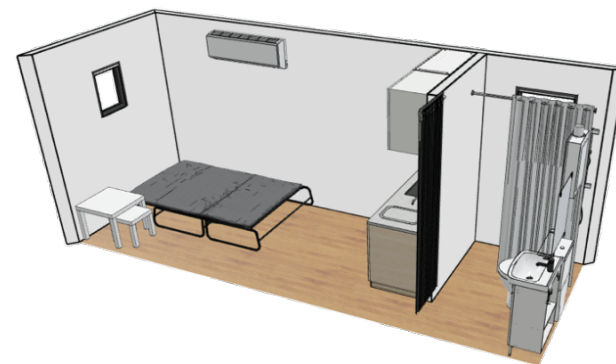
**VALLSTENA 瓦思迪纳** 柜门, 白色  
40x80 cm



**UTRUSTA 乌斯达** 厨房缓冲式合页  
110 °



**JOMOO**  
START YOUR SMART LIFE



**BROGRUND 布鲁格隆德**  
带切换器的头顶/手持花洒套件, 镀铬

70342547



**BROGRUND 布鲁格隆德**  
壁架含挂杆, 不锈钢, 67x27 厘米

30333984



**OPPEJEN 奥佩耶恩 / FOTINGEN 弗洛廷根**  
转角淋浴房带托盘, 90x90x205 厘米

39326253



**ÅNGSJÖN 安雪恩 / BACKSJÖN 巴克约恩**  
洗脸池柜带抽屉/洗脸池/水龙头, 高光 白色, 80x48x39 厘米

79521243



**FAXÄLVEN 法克萨尔温**  
镜柜带内置照明, 白色, 80x15x95 厘米

60548327



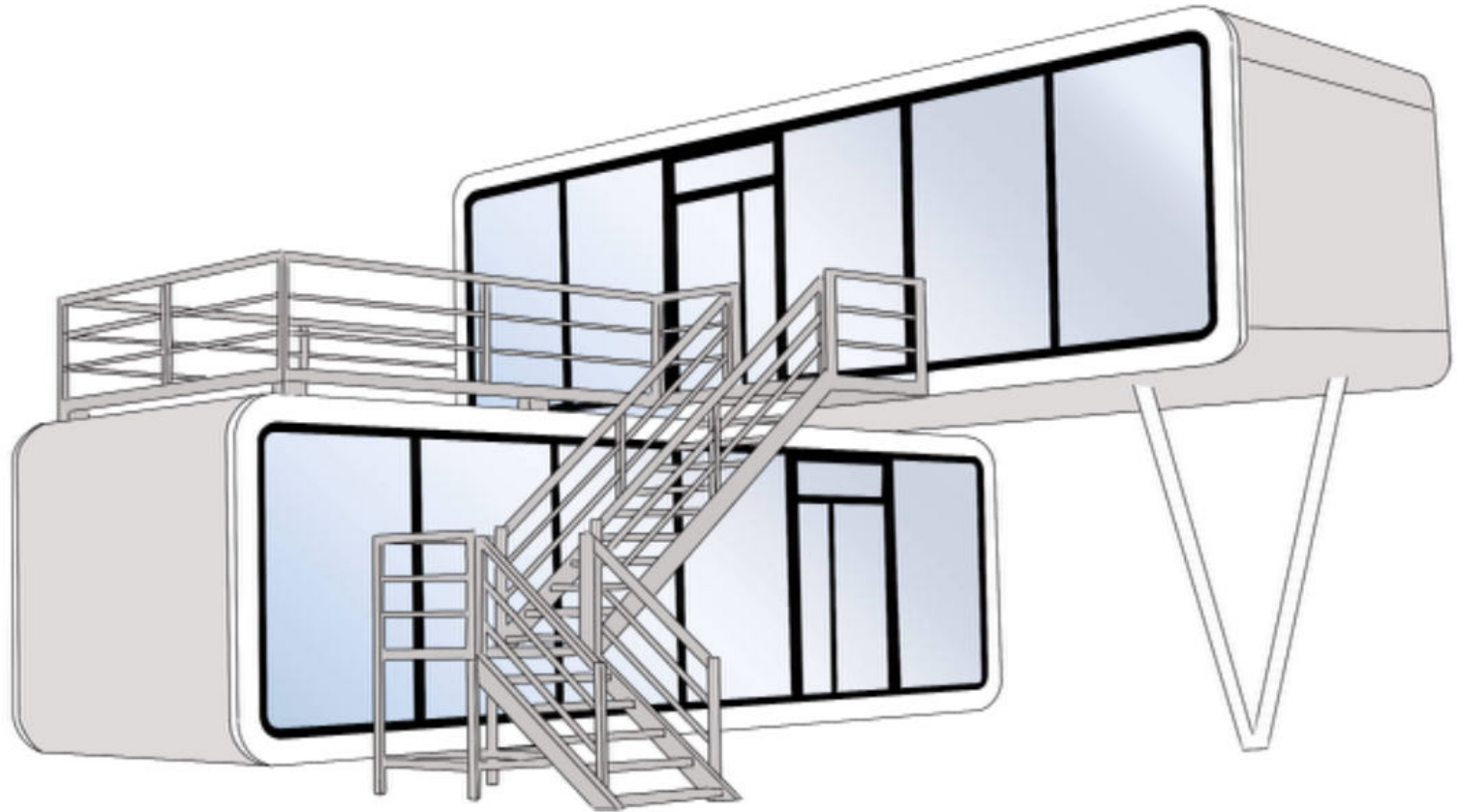


## AGH-AC-58 *DUPLEX*

AGH-AC-58 *Duplex* is a modern marvel that takes spacious living to new heights. The Duplex elevates your living experience with a two-floor design that offers unparalleled space and brightness. Perfect for those who crave a contemporary living solution that doesn't compromise on comfort or style.

Discover a world of possibilities across two levels of thoughtfully crafted living space. Agh-Ac-58 *Duplex* even offers a second floor terrace solution for you to enjoy sunny days.





**AGH-AC-58**  
**Duplex**

L5800mm, W2150mm, H2450mm \*2

**Consult us for pricing**

Fully furnished

*AGH-AC-58 Duplex* has many applications and can be designed to fit your specific needs.

Residential or commercial use are both available and the floor plans and interior design will be made to our customers specific requirements.

Please contact us for a personalized project design and to get a quotation.

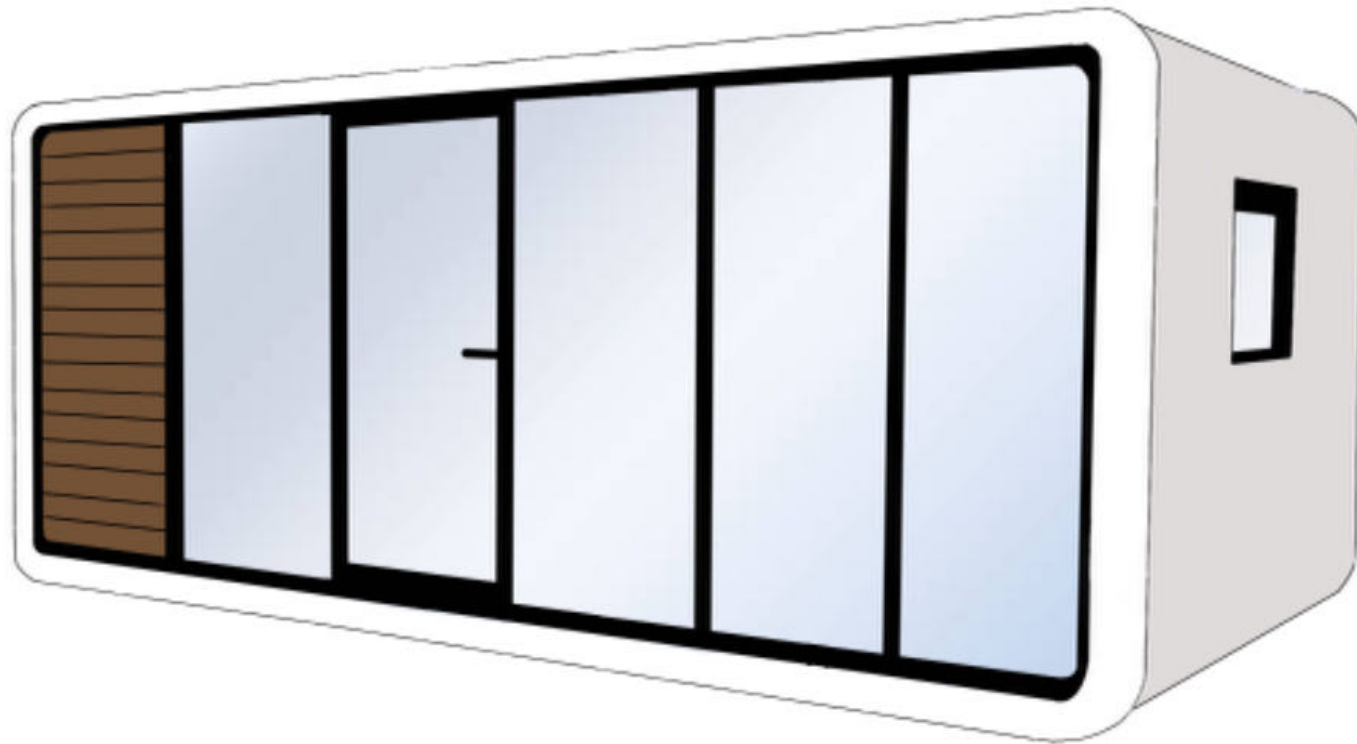




## AGH-AC-115 *COMFORT*

AGH115 *Comfort* has been crafted for individuals or couples who crave ample room to move and breathe. Designed to evoke the luxurious comfort of a boutique hotel, AGH115 offers a sanctuary where every detail contributes to a feeling of indulgence and relaxation. Step into AGH115 and experience the generous proportions and sophisticated design of a master bedroom suite, tailored to exceed your expectations.

AGH-AC-115 Comfort



**AGH-AC-115**  
**Comfort**

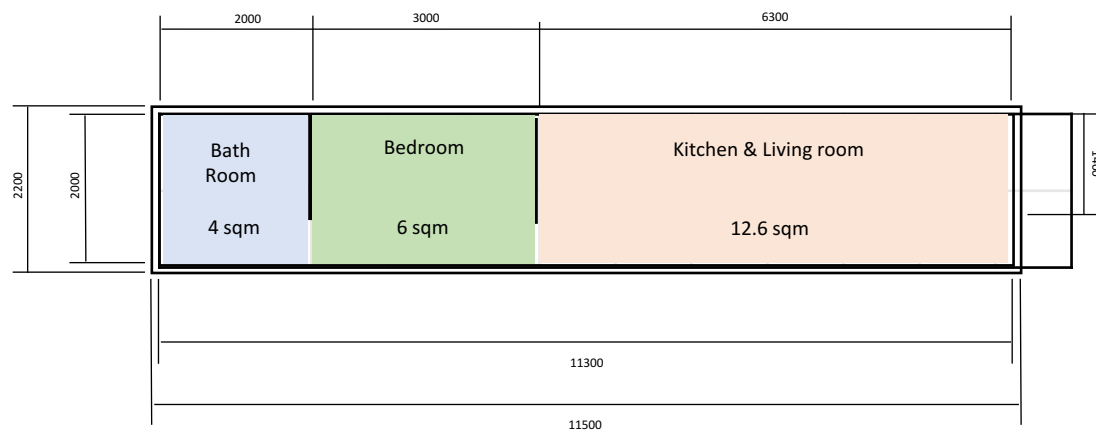
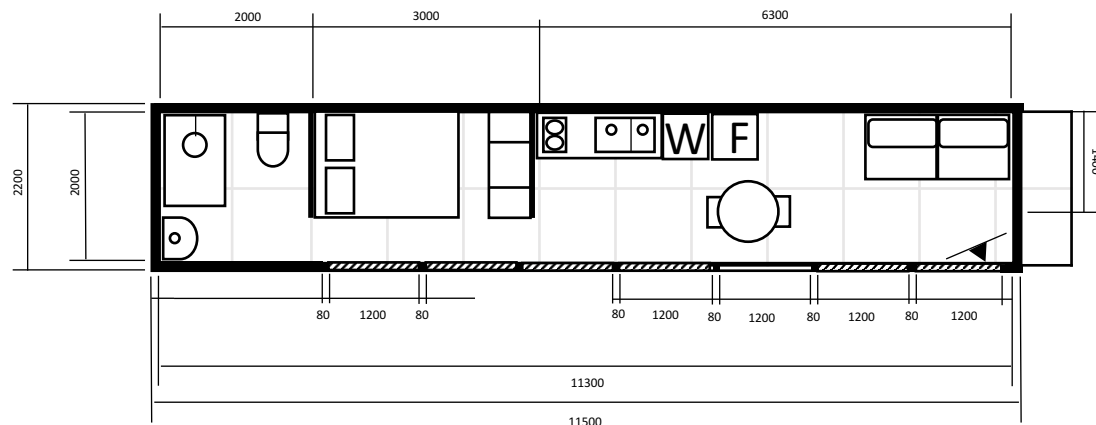
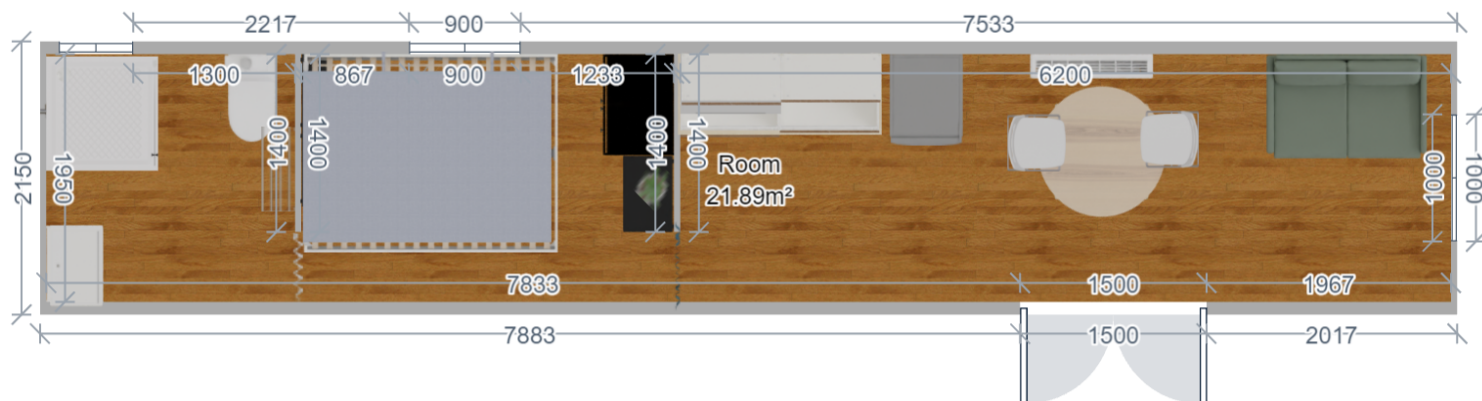
L11500mm, W2150mm, H2450mm

**From \$ 17,800 ExW**

Fully furnished

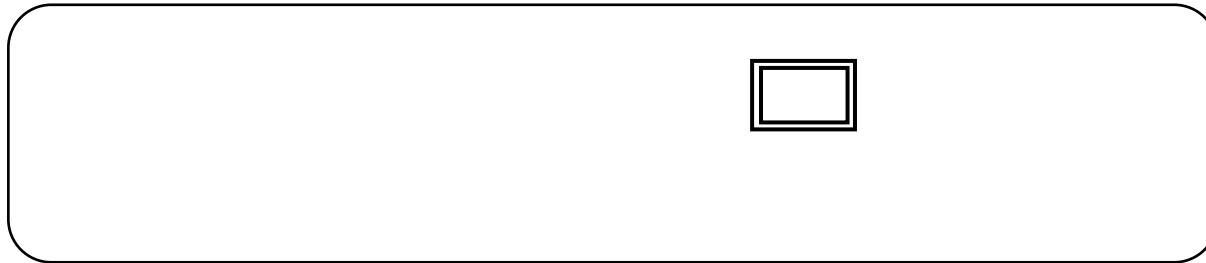


# FLOOR PLAN & ROOM ALLOCATION

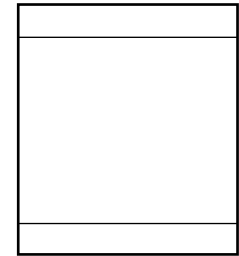


EXTERIOR VISUAL ASPECT

REAR VIEW



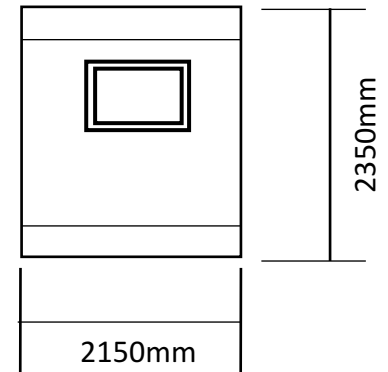
LEFTVIEW



FRONT VIEW



RIGHT VIEW



11300mm

11500mm

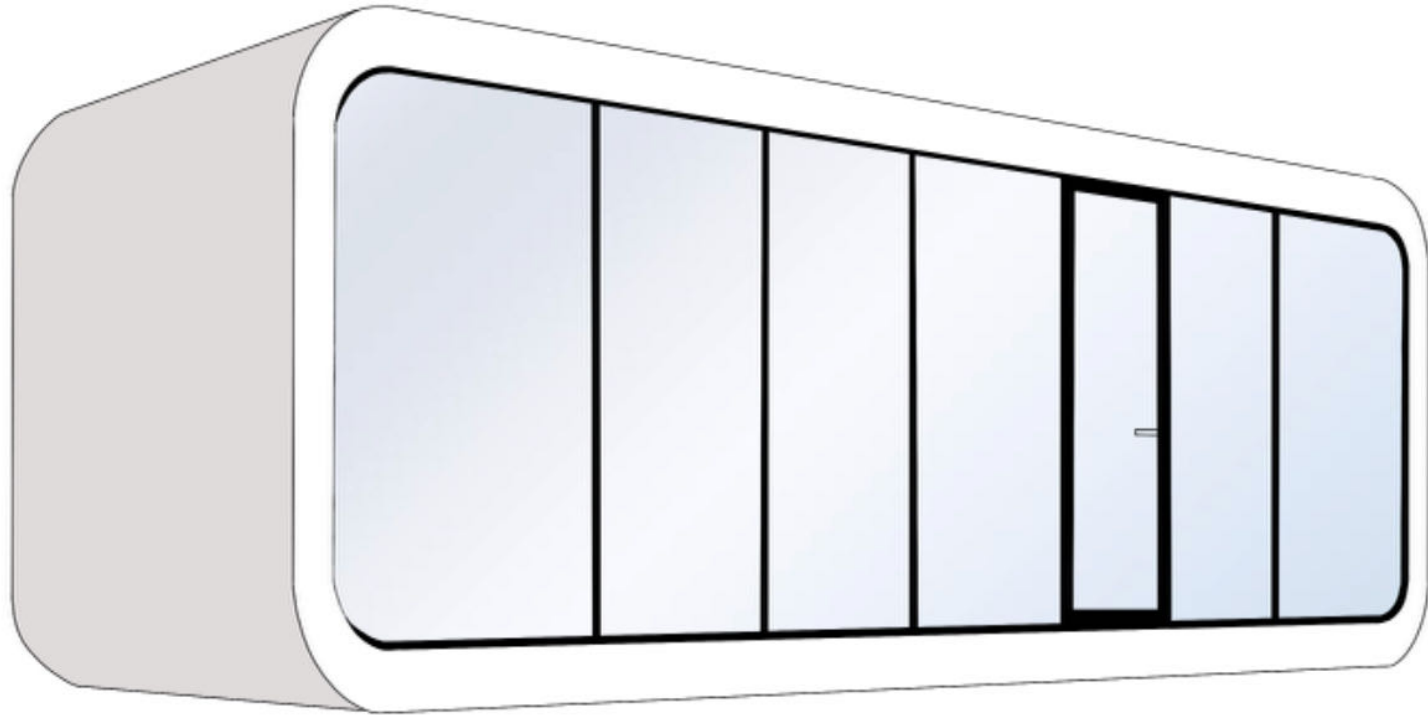




## AGH-AC-115 *FAMILY*

AGH-AC-115 *Family*, where cozy meets smart living for the modern family. Designed with the needs of parents and kids in mind, this innovative housing solution offers a spacious two-bedroom layout, ensuring everyone has their own cozy corner to call home. AGH-AC-115 *Family* combines functionality with style to create a harmonious environment for every member of the household.

AGH-AC-115 Comfort



## AGH-AC-115 Family

L11500mm, W2150mm, H2450mm

**From \$ 17,800 ExW**

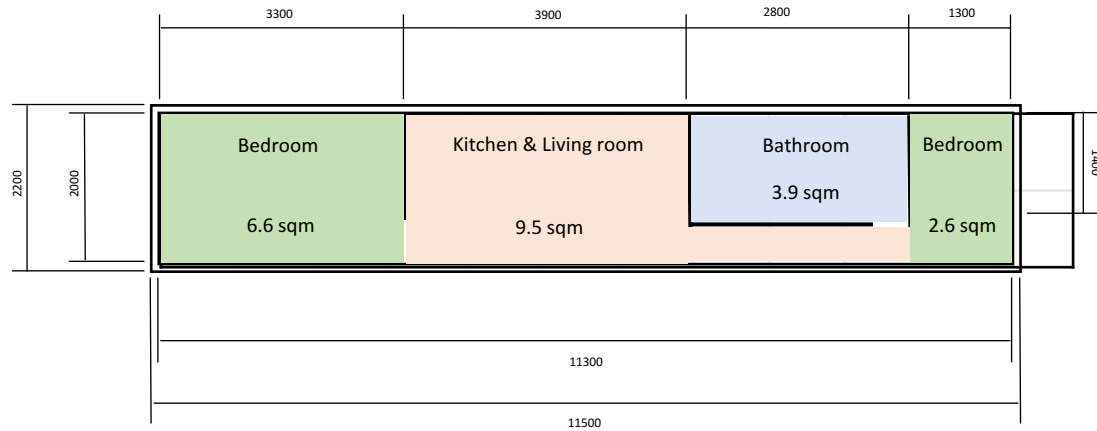
Fully furnished



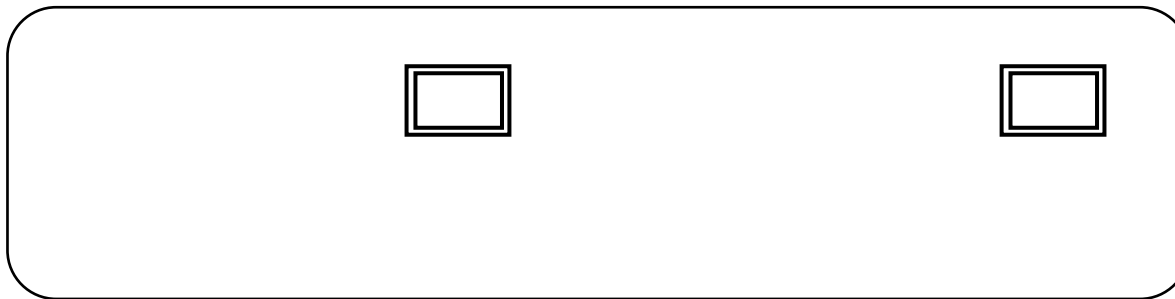
Room 21.72m²

Dimensions (mm):

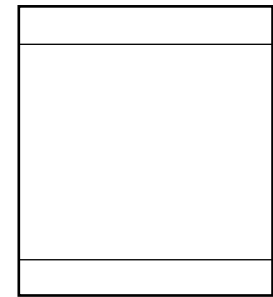
- Overall width: 2150
- Overall length: 5606
- Left carpeted area: 1343 (width), 2065 (length)
- Right carpeted area: 1300 (width), 2065 (length)
- Central area: 1056 (width), 1400 (length)
- Desk area: 1056 (width), 1400 (length)
- Toilet area: 1056 (width), 1400 (length)
- Bathtub area: 1056 (width), 1400 (length)
- Overall room width: 4244
- Overall room length: 5606



REAR VIEW



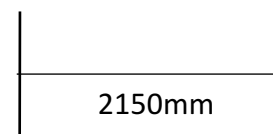
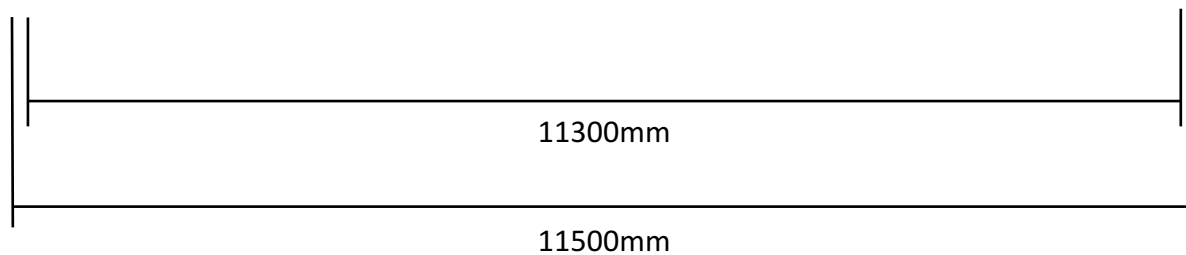
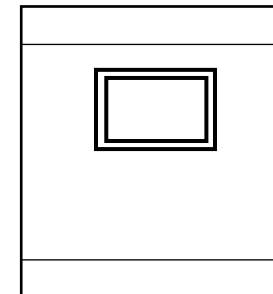
LEFT SIDE



FRONT VIEW



RIGHT SIDE



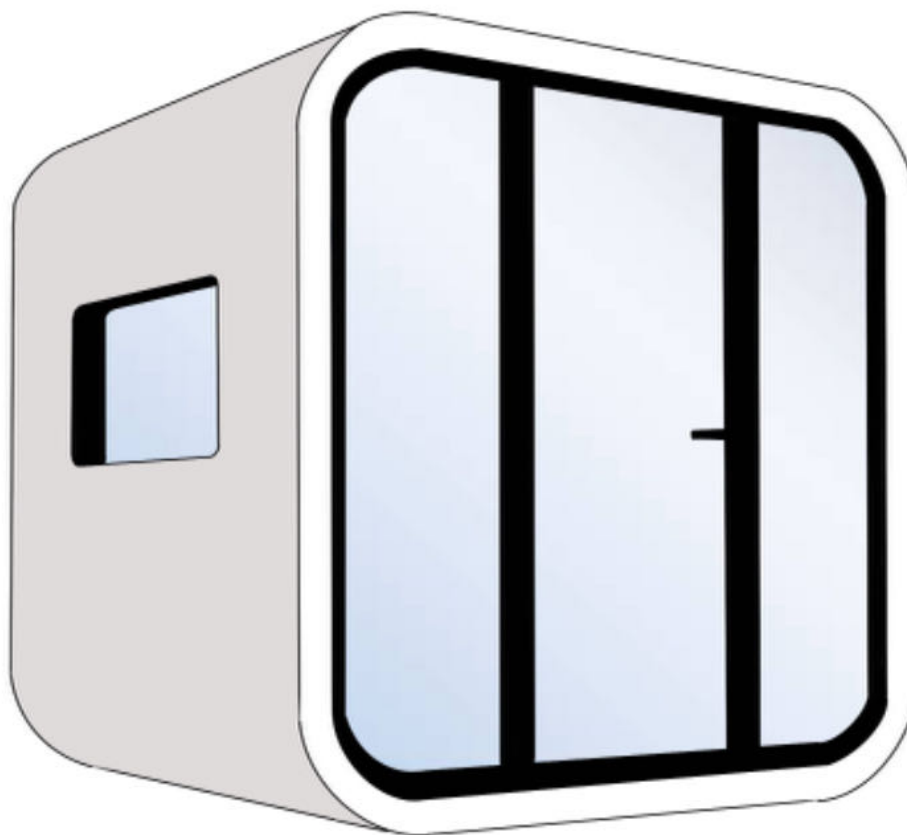


AGH-AC-22

*MOBILE  
OFFICE*

Introducing our latest innovation: a cozy and fully equipped mobile office, designed for entrepreneurs and remote workers seeking a peaceful sanctuary away from the distractions of home life. Say goodbye to interruptions and hello to productivity with this versatile housing option, perfectly suited for those who crave a dedicated workspace within the comfort of their own home.

AGH-AC-115 Comfort



**AGH-AC-22**  
**Mobile Office**

L2200mm, W2150mm, H2450mm

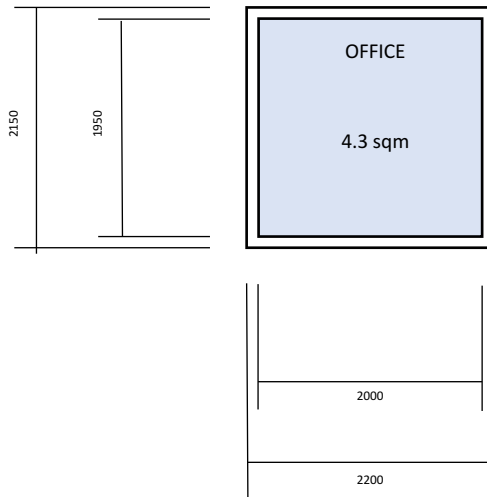
**From \$ 7,200 ExW**

Fully furnished

Floor plan of a room with dimensions and furniture. The room is labeled "Room 3 90m²". The dimensions are: 1172 (width), 1150 (depth), 1180 (width), 1030 (depth), 1030 (width), 1150 (depth), 1180 (width), 1030 (depth). The furniture includes a desk, chair, and a potted plant.




Technical drawing of a rectangular panel. The width is labeled as 2150mm and the height is labeled as 2450mm. The drawing shows a rectangle with a horizontal line near the top and a horizontal line near the bottom, dividing it into three sections. The top and bottom sections are smaller than the middle section.



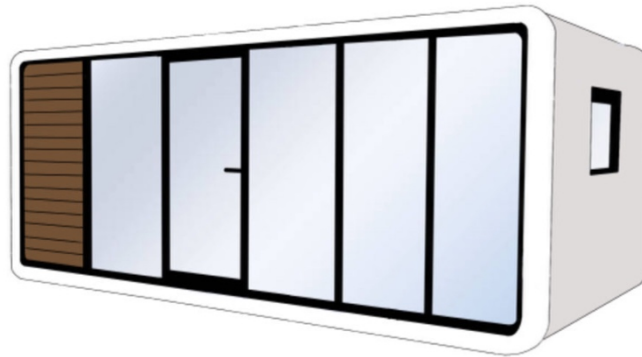
2200mm



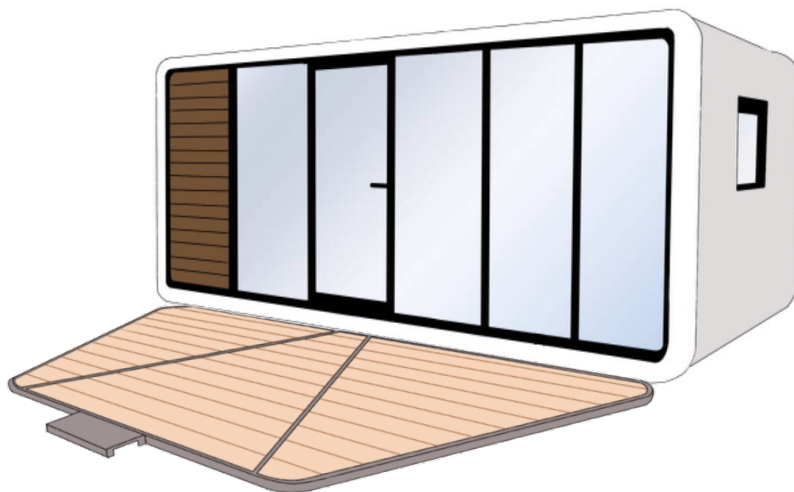


Each cabin in our catalog offers the option to be coupled with a terrace or pergola-style patio, extending your living space and bringing the outdoors in. Imagine stepping outside onto your private terrace, surrounded by nature and bathed in sunlight. Whether you're enjoying a morning cup of coffee, hosting a barbecue with friends, or simply soaking up the fresh air, our outdoor modules provide the perfect setting to relax and unwind, rain or shine.

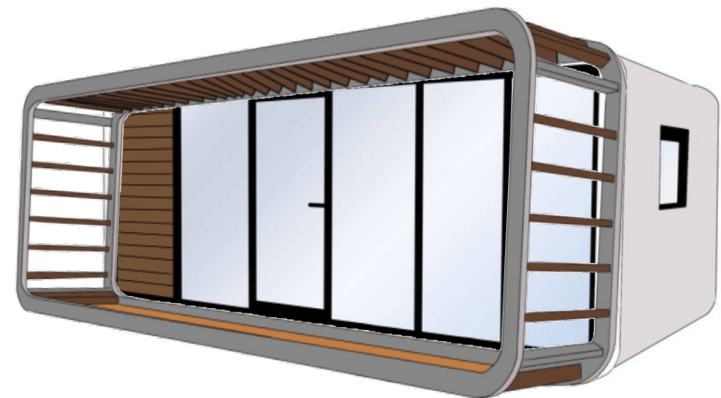
original



with terrace



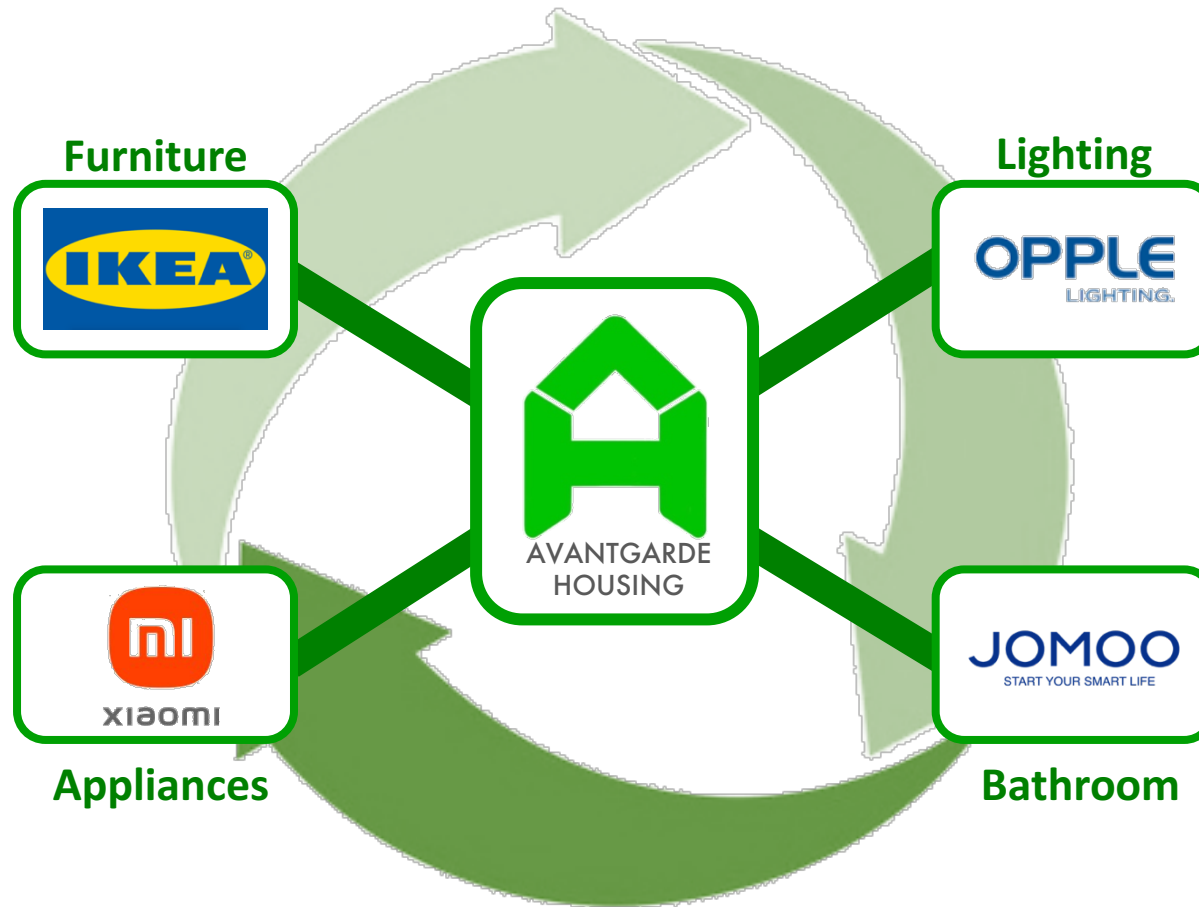
with Pergola style patio

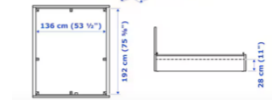
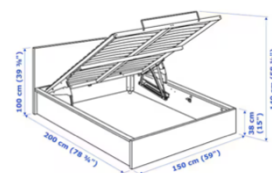
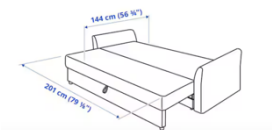
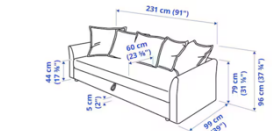


our partners

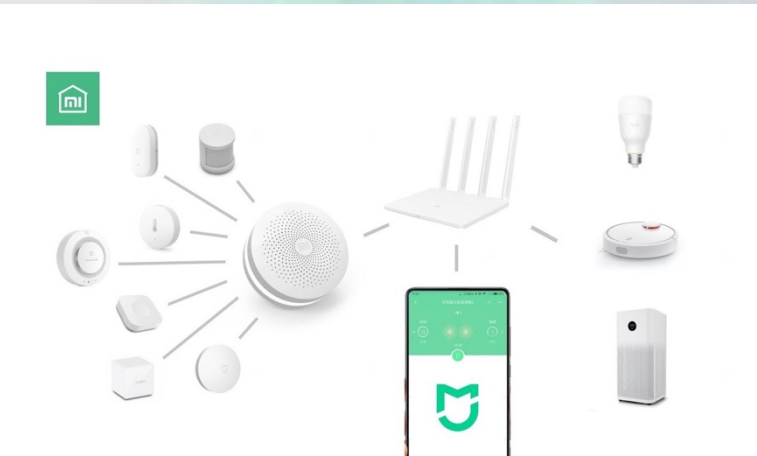


We've forged strategic partnerships with the industry's leading third-party suppliers, ensuring that every aspect of our product exceeds expectations. With a commitment to quality, transparency, and innovation, our partnerships enable us to offer our customers a competitive edge unlike any other. Our exclusive partnerships guarantee access to the finest products available on the market, tailored to meet your unique preferences and lifestyle. But our commitment to excellence doesn't end there. We ensure that every component of your home is sourced ethically and sustainably. With full visibility into our supply chain, you can trust that your investment is not only of the highest quality but also aligned with your values.











logistics



EXW price

FOB price

DDP price



Production in our  
factory  
in Shanghai, China

Transportation to  
Shanghai port

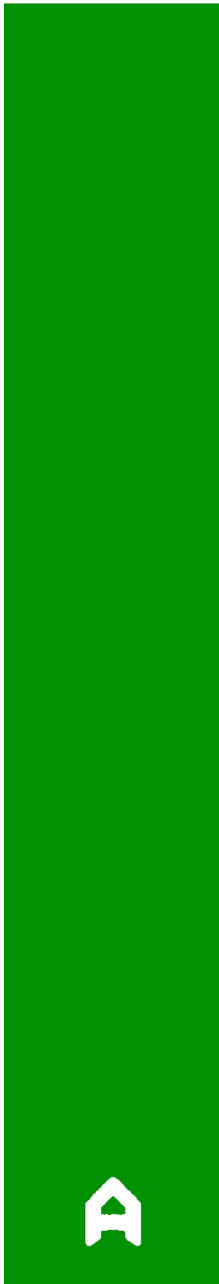
Departure custom  
clearance and  
cargo ship loading

Arrival custom  
clearance  
and transportation to  
customer's address

Delivery to  
final  
destination

## TRANSPORTATION & LOADING





specifications & pricing







# APPLE CABINS

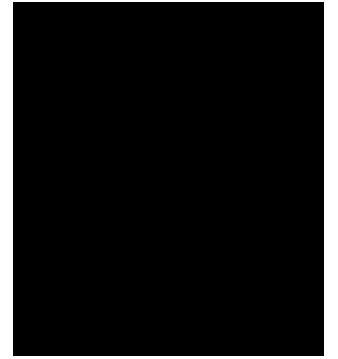
AVANTGARDE HOUSING  
士礼(上海)有限公司

	SIZE		FLOOR SPACE	WEIGHT		CONTAINER LOADING	
				without terrace	with terrace	20FT	40FT
AGH-22	L2200mm W2150mm H2450mm		4.73 m2	1.5	n/a	2	5
AGH-58	L5800mm W2150mm H2450mm		12.47 m2	3T	4.6T	1	2
AGH-115	L11500mm, W2150mm H2450mm		24.7 m2	5T	7T	n/a	1
	EXW (USD)			FOB (USD)		DDP (USD)	
	1 set	2 sets		1 set	2 sets	1 set	2 sets
AGH-22	7,200	14,400	7,830	15,030	DEPENDING ON DESTINATION CONTACT US FOR A QUOTATION		
AGH-58	14,500	29,000	15,130	29,870			
AGH-115	17,800	35,600	18,670	37,340			

Prices can be adjusted based on cost of materials and government regulations. Please contact us for an up to date quotation.

realized projects







[www.avantgarde-housing.com](http://www.avantgarde-housing.com)

get in touch

[contact@avantgarde-housing.com](mailto:contact@avantgarde-housing.com)

士礼（上海）商务有限公司  
Avantgarde Housing Shanghai Co. Ltd